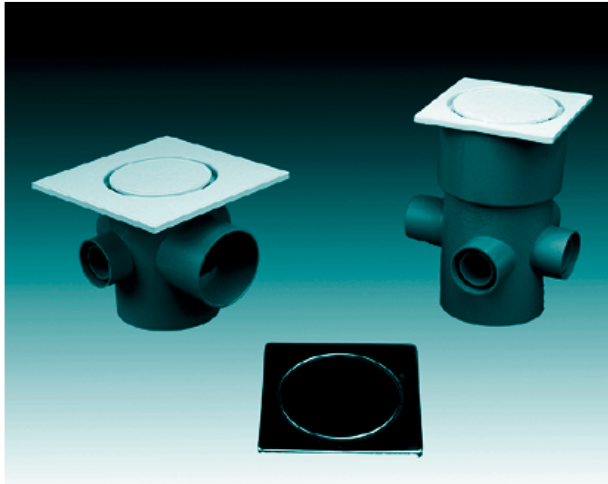


7.00

TRAPPED FLOOR GULLIES

Hunter Soil and Waste Systems



- 7.01 Introduction
- 7.02 Technical data
- 7.03 Fixing method

7.00

Trapped Floor Gullies

7.01 INTRODUCTION

Gullies

Ground floor washing appliances which produce waste water, may discharge into a ground floor gully - waste pipes from such appliances should terminate between the top of the gully water seal and the level of the gully grid. Various appliances can discharge to the same gully.

Benefits

- Tough PVCu to comply with BS4514: 2001 requirements
- Choice of stainless steel or PVCu tile and locking strainer
- Ideal drainage point for use in shower rooms and wash-down areas etc

7.02

Trapped Floor Gullies

SOIL SYSTEM TRAPPED FLOOR GULLIES

Trapped Floor Gullies

Size	Code	A	B	C	D	E	F
82mm	S850	82	117	143	110	55	50
50/55mm	S851	50	117	143	110	55	50

Note: Body only. Tiles to be ordered separately

PVCu Tile and Locking Strainer

Size	Code	A	B
150 x 150mm	S852	147	7
200 X 200mm	S853	198	7

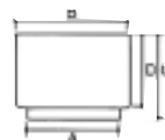
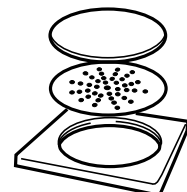
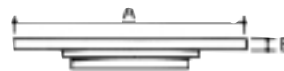
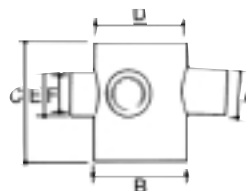
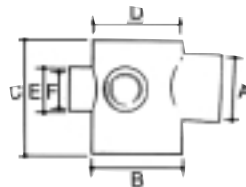
Note: Non-slip finish

Stainless Steel Tile, Grid and Cover Plate

Size	Code	A	B
150 x 150mm	S855	150	7

Floor Gully Raising Piece

Size	Code	A	B	C	D
110mm	S854	110	136	100	81



7.00

Trapped Floor Gullies

7.03 FIXING METHOD

TRAPPED FLOOR GULLY

The trapped floor gully is for use with a solid or tiled floor and has been manufactured primarily for the export market. It has an integral cleaning eye, a choice of white PVCu or stainless steel cover tiles and is available with either a 50mm or 82mm dia. outlet. It has a 25mm water seal (trap) and is commonly used as shown in the typical installation detail, but if suitable it could be used as a shower gully or floor gully for a washroom. BS EN12056-2: 2000 recommends a minimum water seal depth of 50mm for floor drains. Therefore, we recommend that the trapped floor gully be confirmed as acceptable with the local building control department before it is installed in the UK.

Pipe Connections

Outlets

82mm soil pipe is glued into the outlet of the trapped floor gully S850. Use waste pipe fitting, such as the coupling W711 to connect the 50mm MuPVC pipe to BS EN1566:2000 to the gully outlet of the S851.

Inlets

The closed side boss inlets should be drilled out with a hole cutter prior to connection. Use either a 50mm cutter to connect 50mm or 32mm MuPVC waste pipe. To connect 50mm MuPVC pipe to BS EN1566:2000 a fitting is glued over the outer ring of the side boss inlets. Whilst 32mm pipe is joined to the side boss with either a push fit boss adaptor W58 or solvent weld boss adaptor W104.

A 34mm cutter is needed to connect 40mm MuPVC pipe. The 40mm solvent weld pipe is glued directly over the inner ring of the side boss.

Raising Pieces

The depth of the gully can be adjusted by using the gully raising pieces S854 that can be cut to suit the depth required. Flow rates are expressed in the flow of water in litres per second.

